



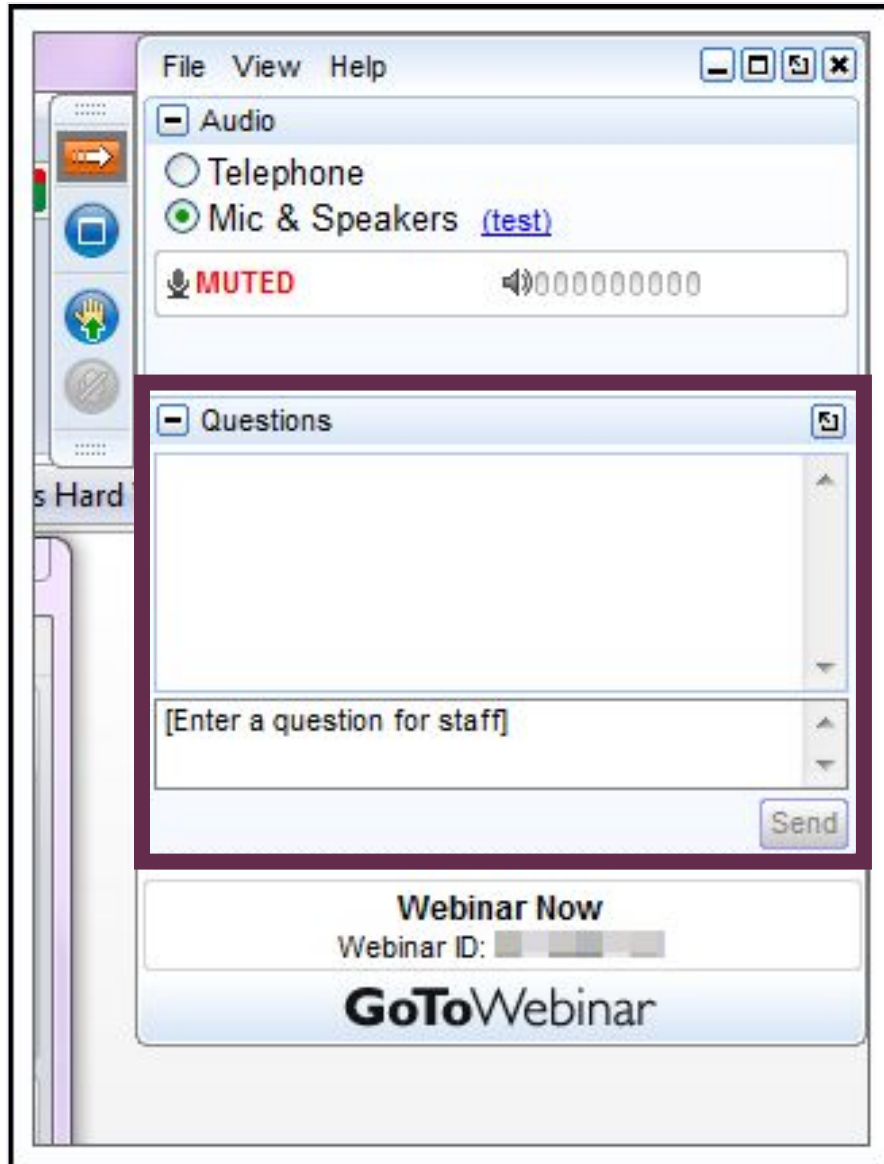
WFLO INSTITUTE WEBINARS

GCCA's Core Provider of Education & Training

GCCA Update on COVID-19

February 18, 2021





Phone lines are muted throughout the broadcast.

Please ask questions using the “Questions” panel in your **GoTo**Webinar toolbar.

We will hold questions until the end of the webinar and will answer as many questions as time permits.

This session is being recorded and will be made available to all members following the broadcast.



Speakers and Moderator



Lowell Randel
Senior Vice President,
Government and Legal Affairs
Global Cold Chain Alliance



Jordan Bonfitto
Director of Government
Affairs
Global Cold Chain Alliance



Erin Grady
Manager, Education and
Knowledge Management
Global Cold Chain Alliance

Agenda

- COVID-19 Relief Legislation
- Policy Updates
- GCCA Advocacy Center
- Q&A

Next COVID Relief Package

- President Biden has proposed a \$1.9 trillion American Rescue Plan
- Democratic leaders in the House and Senate have begun a process to use Budget Reconciliation to advance the relief legislation
- Controversial mechanism that allows a simple majority to pass in the Senate (avoids the filibuster)
- Avoids the filibuster and means package can pass without Republican support
- House Committees have begun drafting legislative language

Key Agriculture Committee Provisions

FOOD SUPPLY CHAIN AND AGRICULTURE PANDEMIC RESPONSE

- Would provide \$4 billion to support supply chain
- Purchase food and agricultural commodities
- Purchase and distribute agricultural commodities (including fresh produce, dairy, seafood, eggs, and meat) to individuals in need
- Make grants and loans for small or midsize food processors or distributors, seafood processing facilities producers, or other organizations to respond to COVID-19
- Make loans and grants and provide other assistance to maintain and improve food and agricultural supply chain resiliency

Key Ways and Means Committee Provisions

- Direct payment of \$1,400 per person (brings total relief to \$2,000 per person.)
- Extends temporary federal unemployment and benefits through August 29, 2021.
- Increases the weekly benefit from \$300 to \$400.
- Enhances the Earned Income Tax Credit for workers without children by nearly tripling the maximum credit and extending eligibility.
- Expands the Child Tax Credit to \$3,000 per child (\$3,600 for children under 6), and makes it fully refundable and advanceable.

Key Education and Labor Committee Provisions

- Increases the minimum wage to \$15 an hour by 2025 and guarantees that tipped workers, youth workers, workers with disabilities are paid the full federal minimum wage.
- \$150 million to implement COVID –19 worker protection programs, including \$75 million specifically for OSHA

Key Small Business Committee Provisions

- Expand Paycheck Protection Program eligibility and increase program funding
- Allocate \$15 billion for the Targeted Economic Injury Disaster Loan (EIDL) Advance program
- Provide \$25 billion for a new program at the SBA offering assistance to restaurants and other food and drinking establishments.
- Appropriate \$840 million for administrative costs to prevent, prepare and respond to the COVID–19 pandemic, including expenses related to PPP, aid to Venues, and grants to restaurants.
- Fund \$460 million for the disaster loan program

PRESIDENT JOSEPH R. BIDEN, JR.

NATIONAL STRATEGY FOR THE COVID-19 RESPONSE AND PANDEMIC PREPAREDNESS

JANUARY 2021



Biden COVID Strategy

- Goal 1: Restore trust with the American people.
- Goal 2: Mount a safe, effective, comprehensive vaccination campaign.
- Goal 3: Mitigate spread through expanding masking, testing, treatment, data, workforce, and clear public health standards.
- Goal 4: Immediately expand emergency relief and exercise the Defense Production Act.
- Goal 5: Safely reopen schools, businesses, and travel, while protecting workers.
- Goal 6: Protect those most at risk and advance equity, including across racial, ethnic and rural/urban lines.
- Goal 7: Restore U.S. leadership globally and build better preparedness for future threats.

Executive Order: Protecting Worker Health and Safety

- Requires OSHA to release guidance within two weeks to employers on workplace safety during the pandemic
- Calls on OSHA to evaluate whether any emergency temporary standards are needed.
 - OSHA has until March 15 to issue emergency standards
- Requires a review of OSHA's enforcement efforts related to COVID-19 and requires the administration to identify what changes could be made to protect workers

New OSHA Guidance – COVID Prevention Program

- Assignment of a workplace coordinator
- Identification of where and how workers might be exposed to COVID-19 at work
- Identification of measures that will limit the spread of COVID-19 in the workplace, in line with the principles of the hierarchy of controls.
- Consideration of protections for workers at higher risk for severe illness through supportive policies and practices

New OSHA Guidance – COVID Prevention Program

- Establishment of a system for communicating effectively with workers
- Educate and train workers on your COVID-19 policies and procedures
- Instruct workers who are infected or potentially infected to stay home and isolate or quarantine
- Minimize the negative impact of quarantine and isolation on workers
- Isolating workers who show symptoms at work

New OSHA Guidance – COVID Prevention Program

- Performing enhanced cleaning and disinfection
- Providing guidance on screening and testing
- Recording and reporting COVID-19 infections and deaths
- Implementing protections from retaliation and setting up an anonymous process for workers to voice concerns about COVID-19-related hazards
- Making a COVID-19 vaccine or vaccination series available at no cost to all eligible employees
- Not distinguishing between workers who are vaccinated and those who are not

OSHA Emergency Temporary Standard

- Would initially apply for 6 months – give time for development of a permanent standard
- Likely similar to what states have done (VA, MI, OR, CA)
- Focus on application of CDC and OSHA guidance
- Critical that facilities have COVID plans in place and can document policies and operations to protect workers
- Expect increased inspections and enforcement related to COVID

WHO and China Virus Statements

- China continues to advance theory that COVID-19 could have entered the country on frozen food or food packaging
- WHO recently completed site visits in China and evaluated various theories about virus origin
- While animal to human transmission was found most likely, WHO indicated the theory regarding food transmission would be further explored
- Theory is NOT supported by science and leading food safety officials
- GCCA and industry partners fighting against this unsubstantiated claim

Vaccine Issues

- GCCA continuing to work with Federal and State officials on essential worker access to vaccines
- InHouse Physicians on-site vaccination program
- Concept for government supported mobile vaccination clinics
- Survey Questions

InHouse Physicians COVID-19 Vaccination Program



InHouse Physicians Vaccination Program



1
Registration



2
**Vaccination
By IHP
Medical
Professional**



3
**Monitoring
by IHP
Medical
Professional**



4
**Proof of
Vaccination**



*On-Site COVID-19 Vaccine Clinic

Includes:

- Scheduling
- Shipping & Storage
- Administration of Vaccine
- Reporting to Client + State/CDC



*A minimum of 200 Participants each day IHP medical staff is on-site

Advocacy Fund

GCCA invites members to contribute to the new Advocacy Fund which will enable expanded services including:

- New virtual platform for communications with elected officials in the US, Canada and Australia
- GCCA expanded participation and leadership in coalitions
- GCCA participation with partners in legal challenges to problematic regulations
- Expanded GCCA presence on Capitol Hill
- Congressional Facility Tours with your Member of Congress
- Development of economic impact studies to better communicate the importance of the industry to policy makers and general public



ADVOCACY | INDUSTRY PROMOTION | RESEARCH | INTERNATIONAL



GCCA STANDS WITH YOU. THE TIME TO ACT IS NOW.

Never before has our industry faced such uncertainty and vulnerability from America's policymakers, in the White House and in both chambers of Congress. **A new Administration and new Congress represent new challenges and opportunities that we will need to face as an industry, together.**

The incoming Administration and Democratic controlled Congress could implement burdensome regulations and increase oversight on our industry in a number of ways. This includes:



OSHA COVID-19 STANDARDS

- Enacting a national emergency temporary standard for industry
- Sets the stage for permanent regulation on infectious disease control in the workplace



CLIMATE CHANGE

- Pursuing aggressive policies to address climate change, through both executive action and legislation
- Rejoining the Paris Climate Agreement, eliminating green-house gas emissions, and implementing the Green New Deal



TAXES

- Rolling back the Trump tax cuts
- Increasing the corporate tax rate from 21% to 28%, phasing out deductions for pass-through entities
- Raising the top marginal income-tax rate from 37% to 39.6%
- Less money in the pockets of businesses means less jobs available for hardworking employees



LABOR

- Strengthening worker organizing, collective bargaining and unions through executive action and legislation such as the PRO Act
- Labor initiatives, like 'micro-unit' organizations and joint employer policies could quickly be reinstated



ADDITIONAL REGULATIONS

- Revisiting EPA's Risk Management Program (RMP) regulation and making additional requirements
- Changes to Process Safety Management

WITH NEW RULES, REGULATIONS, AND BURDENSOME POLICIES ON THE HORIZON, WE MUST TAKE ACTION TO PROTECT OUR INDUSTRY. THERE IS SOMETHING YOU CAN DO.



+1 703 373 4300
EMAIL@GCCA.ORG
GCCA.ORG

241 18TH STREET SOUTH,
SUITE 620
ARLINGTON, VIRGINIA, 22202

/GLOBALCOLDCHAINALLIANCE
 @GCCAORG
 /GLOBAL-COLD-CHAIN-ALLIANCE-GCCA

GCCA Advocacy Center

Advocacy.gcca.org



About Us



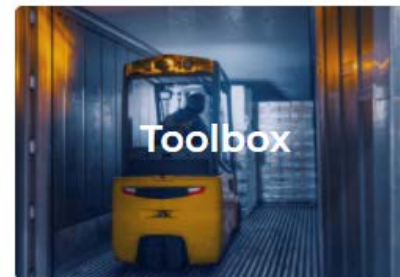
Advocacy Fund



News Center



Find Legislator



Toolbox



Sign Up

About Us

Background on GCCA and its Core Partners

[Advocacy.gcca.org](https://advocacy.gcca.org)

About Us

The Global Cold Chain Alliance, GCCA, represents more than 1,300 companies in 85 countries who serve the food industry by providing third-party, temperature-controlled supply chain services known as the cold chain. Over 40 percent of GCCA members are outside North America.

The cold chain refers to the temperature management of perishable products, in order to maintain quality and safety from the point of slaughter or harvest through the distribution chain to the final consumer.

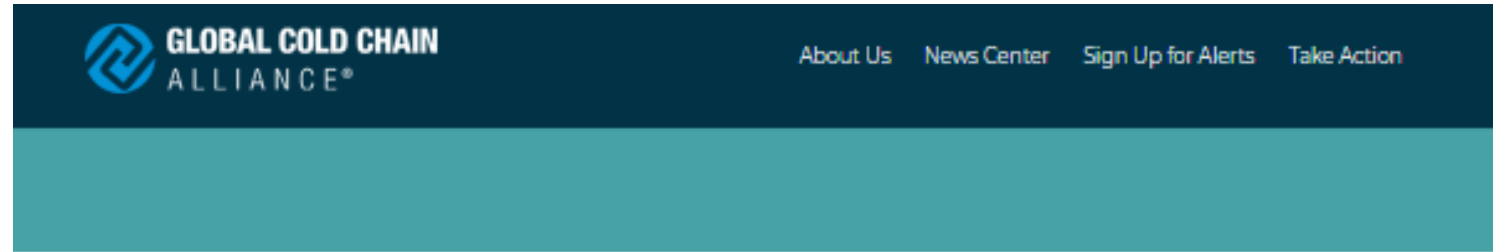
Supporting this critical mission are three Core Partner trade associations, which provide relationships, resources, and recognition to its members, and one foundation.

- **International Association of Refrigerated Warehouses (IARW)**
is the third-party logistics (3PL), temperature-controlled warehouse industry's association.
- **International Refrigerated Transportation Association (IRTA)**
is the temperature-controlled transportation and logistics industry's association.
- **Controlled Environment Building Association (CEBA)**
is the association for experts in the design and construction of temperature-controlled facilities.
- **The Global Cold Chain Alliance and its Core Partners**
are supported by the **World Food Logistics Organization (WFLO)**, a nonprofit foundation. WFLO develops education and research for the industry and provides cold chain advisory services that empower economic development and strengthen the global cold chain.

Locate Your Legislator

As we expand GCCA's presence on Capitol Hill and create grassroots campaigns it is vital to identify who your Senator and Member of Congress is to ensure that those who are making decisions in Washington, DC know how they impacting you and your businesses back home.

[Advocacy.gcca.org](https://advocacy.gcca.org)



Locate your Legislator

Enter your address to find your state and federal representatives

Enter your address to find who represent

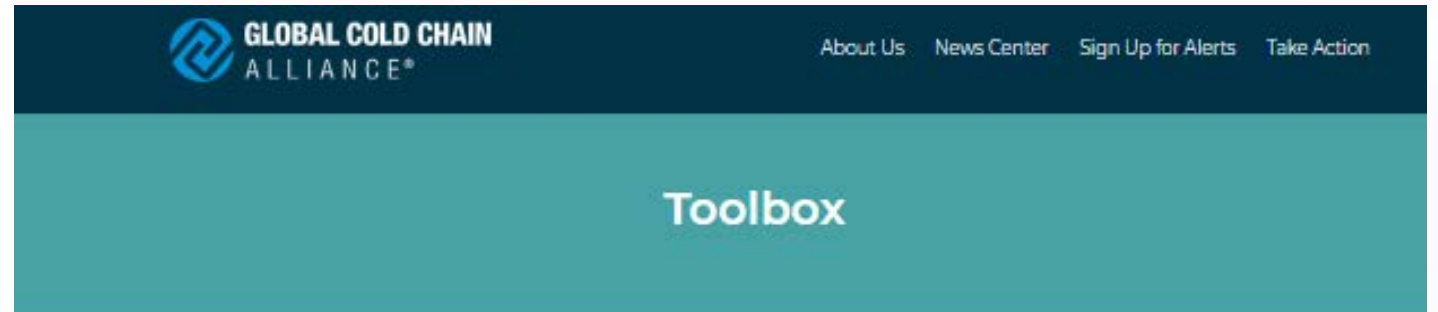
Show level of government: State Federal

INSI
WEBI


Toolbox

As we continue to tell the GCCA story we want to provide easily accessibility materials to help amplify that effort.

Advocacy.gcca.org



Resources

 Who We Are

Take Action

Take Action

Grassroot campaigns will be utilized to ensure your voices are heard by policy makers on pressing matters impacting our industry.

[Advocacy.gcca.org](https://advocacy.gcca.org)



United States

Make your voice heard and join our grassroots campaigns to protect our business from potential burdensome regulations and legislation.



Australia

GCCA's new grassroots platform enables the industry to conduct advocacy campaigns in Australia. GCCA looks forward to working with members in Australia to advance policy priorities. Please contact [Lowell Randel](#) if you have suggestions about pressing policy issues or grassroots campaigns in Australia.



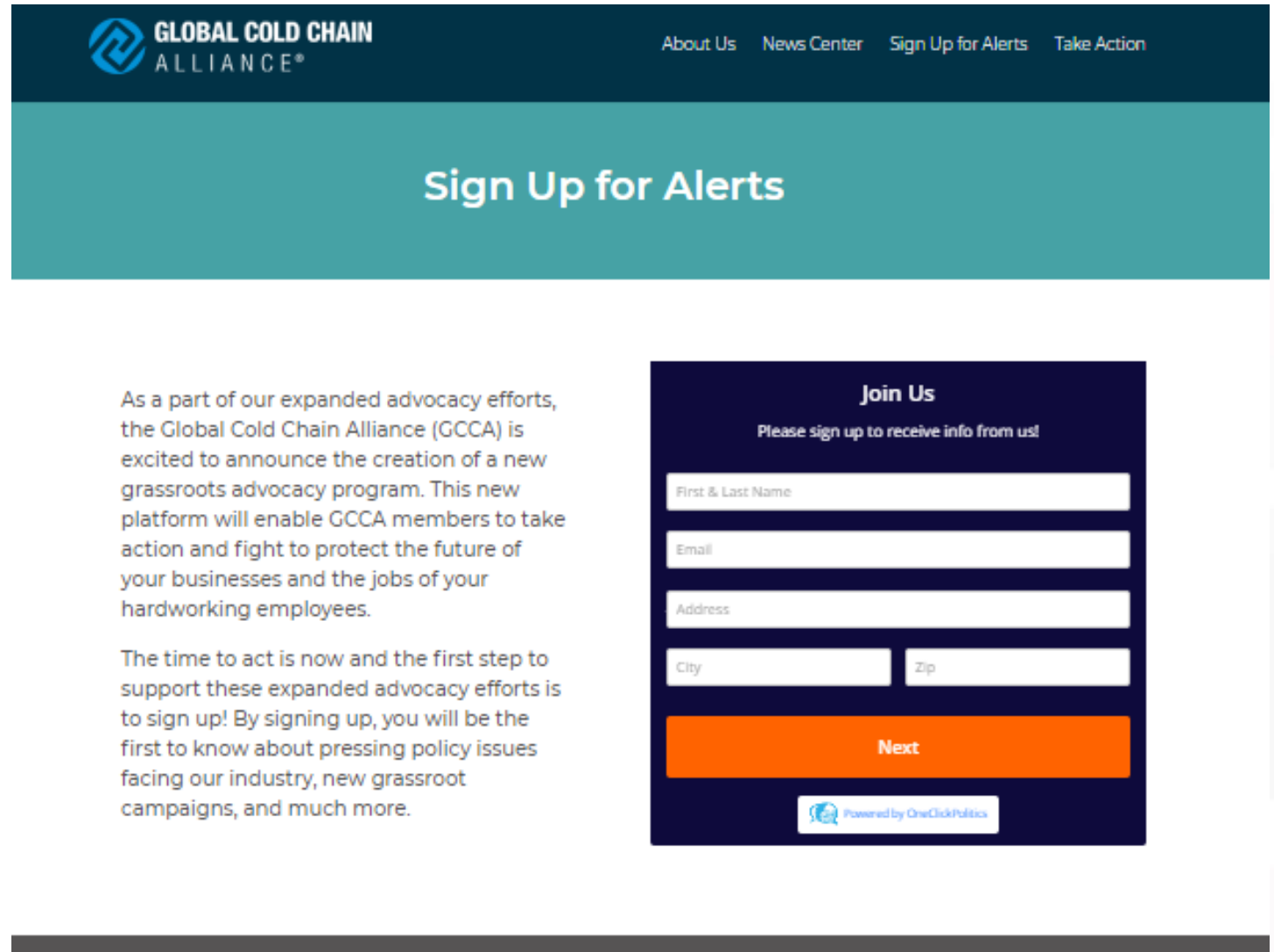
Canada

GCCA's new grassroots platform enables the industry to conduct advocacy campaigns in Canada. GCCA looks forward to working with members in Canada to advance policy priorities, advocating on behalf of our international partners. Please contact [Lowell Randel](#) if you have suggestions about pressing policy issues or grassroots campaigns in Canada.

Sign Up for Alerts

In order to get the most up to date information regarding legislation, regulations, and grassroots campaigns you must sign up!

Advocacy.gcca.org



The screenshot shows the top navigation bar of the Global Cold Chain Alliance website. The logo is on the left, and navigation links for 'About Us', 'News Center', 'Sign Up for Alerts', and 'Take Action' are on the right. Below the navigation is a teal banner with the text 'Sign Up for Alerts'. The main content area features a dark blue box with the heading 'Join Us' and the subtext 'Please sign up to receive info from us!'. This box contains a sign-up form with fields for 'First & Last Name', 'Email', 'Address', 'City', and 'Zip', followed by an orange 'Next' button. Below the form is a small logo for 'Powered by OneClickPolitics'. To the left of the form, there are two paragraphs of text explaining the new grassroots advocacy program and the importance of signing up.

GLOBAL COLD CHAIN ALLIANCE®

About Us News Center Sign Up for Alerts Take Action

Sign Up for Alerts

As a part of our expanded advocacy efforts, the Global Cold Chain Alliance (GCCA) is excited to announce the creation of a new grassroots advocacy program. This new platform will enable GCCA members to take action and fight to protect the future of your businesses and the jobs of your hardworking employees.

The time to act is now and the first step to support these expanded advocacy efforts is to sign up! By signing up, you will be the first to know about pressing policy issues facing our industry, new grassroots campaigns, and much more.

Join Us

Please sign up to receive info from us!

First & Last Name

Email

Address

City Zip

Next

Powered by OneClickPolitics

GCCA Resource: COVID-19 Recovery Guide

Follow-up to GCCA COVID-19 Rapid Response Guide.

Guides businesses through two stages of recovery:

- Bringing your workforce back on-site
- Ensuring continued safety and well-being



Essential Worker Designation and Badges

INSERT COMPANY LOGO



FIRST NAME LAST NAME

Company Name

Facility Address Line 1
Facility City, State Zip
United States

**Designated Essential Critical Infrastructure Worker
by U.S. Department of Homeland Security CISA**

**Frontline Workers in Food and Agriculture and
Transportation and Logistics have been categorized
as Essential Workers by the U.S. Centers for Disease
Control for purposes of vaccine prioritization**



Essential Critical Infrastructure Workforce

FOOD AND AGRICULTURE

- Workers supporting groceries, pharmacies, convenience stores, and other retail (including unattended and vending) that sells human food, animal/pet food and pet supply, and beverage products, including retail customer support service and information technology support staff necessary for online orders, pickup and delivery.
- Restaurant carry-out and quick serve food operations, including dark kitchen and food prep centers, and carry-out and delivery food employees.
- Food manufacturer employees and their supplier employees—to include those employed in food ingredient production and processing facilities; livestock, poultry, seafood slaughter facilities; pet and animal feed processing facilities; human food facilities producing by-products for animal food; beverage production facilities; and the production of food packaging.
- Farmers, farm workers, and agribusiness support services to include those employed in auction and sales; grain and oilseed handling, processing and distribution; animal food, feed, and ingredient production, packaging, and distribution; manufacturing, packaging, and distribution of veterinary drugs; truck delivery and transport; farm and fishery labor needed to produce our food supply domestically and for export.
- Farmers, farm workers, support service workers, and their supplier employees to include those engaged in producing and harvesting field crops, commodity inspection; fuel ethanol facilities; biodiesel and renewable diesel facilities; storage facilities; and other agricultural inputs.
- Employees and firms supporting the distribution of food, feed, and beverage and ingredients used in these products, including warehouse workers, vendor-managed inventory controllers and blockchain managers.
- Workers supporting the sanitation and pest control of all food manufacturing processes and operations from wholesale to retail.
- Employees engaged in the manufacture and maintenance of equipment and other infrastructure necessary for agricultural production and distribution.

TRANSPORTATION AND LOGISTICS

- Workers supporting the distribution of food, pharmaceuticals (including materials used in radioactive drugs) and other medical materials, fuels, chemicals needed for water or water treatment and energy Maintenance and operation of essential highway infrastructure, including roads, bridges, and tunnels (e.g., traffic operations centers and moveable bridge operators).
- Employees of firms providing services, supplies, and equipment that enable warehouse and operations, including cooling, storing, packaging, and distributing products for wholesale or retail sale or use. Includes cold- and frozen-chain logistics for food and critical biologic products.
- Warehouse operators, including vendors and support personnel critical for business continuity (including HVAC & electrical engineers; security personnel; and janitorial staff) and customer service for essential functions.
- Employees supporting or enabling transportation functions, including truck drivers, bus drivers, dispatchers, maintenance and repair technicians, warehouse workers, truck stop and rest area workers, Department of Motor Vehicle (DMV) employees, towing/recovery services, roadside assistance workers, intermodal transportation personnel, and workers who maintain and inspect infrastructure (including those that require cross-jurisdiction travel).

CONNECT WITH US
www.cisa.gov

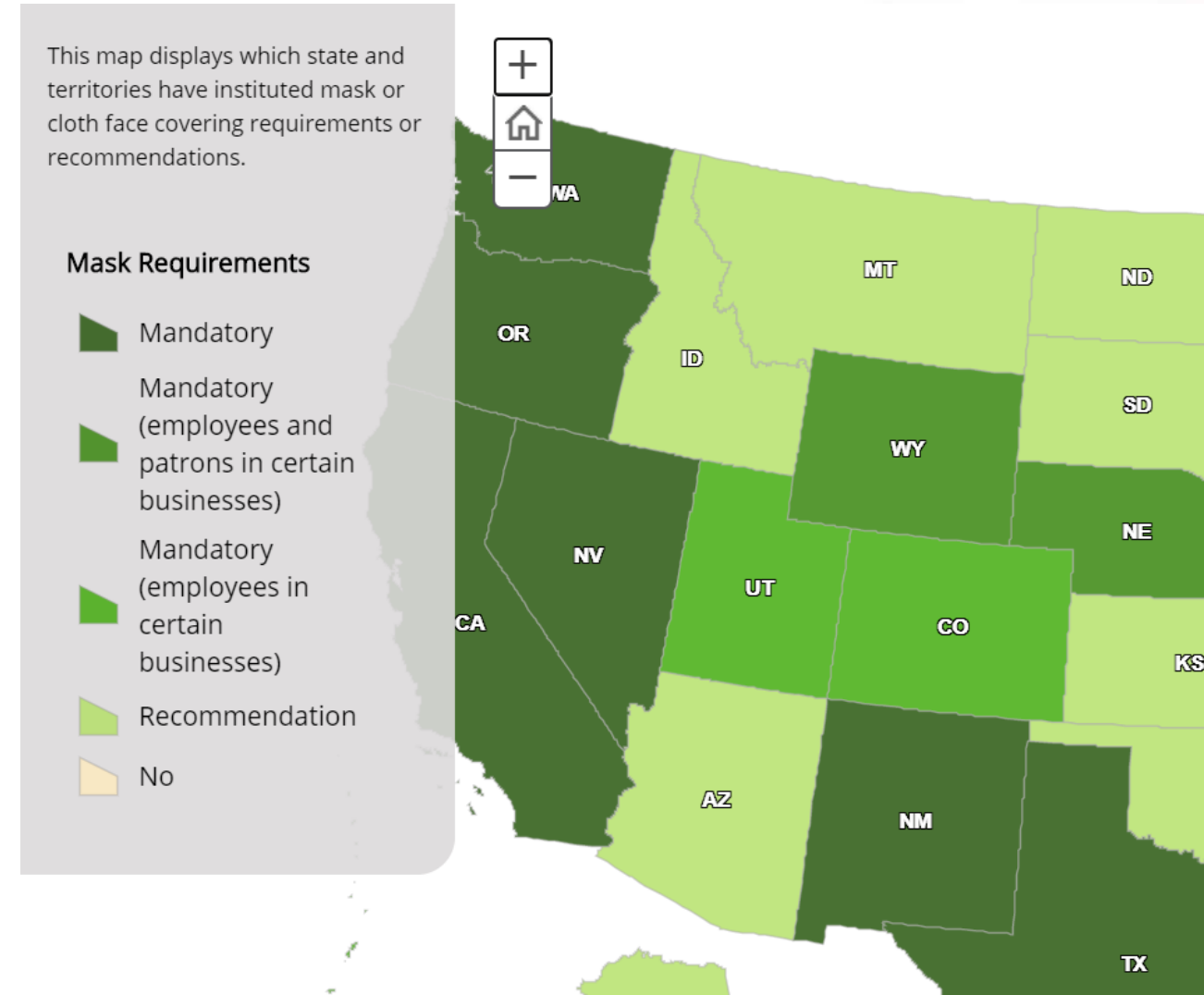
 [linkedin.com/company/cybersecurity-and-infrastructure-security-agency](https://www.linkedin.com/company/cybersecurity-and-infrastructure-security-agency)



Tracking Reopening State-by-State

National Governors Association's interactive map tracks metrics such as:

- Mask orders
- Allowable gathering sizes
- Interstate travel restrictions
- Stay at home orders



State Vaccination Program Resources

AutoSave Off State Vaccine Plans - Read-Only - Excel Lowell Randel

File Home Insert Page Layout Formulas Data Review View Help

Clipboard Font Alignment Number Styles Cells Editing Ideas Sensitivity

Share Comments

C5 AZ State Plan

	A	B	C	D	E	F	G	H	I	J	K
1	State	Essential Workers Phase	Plan Link	Current Status	Other Relevant Links	POD Information					
2	Alabama	Phase 1B (frontline essential), 1C (other essential)	AL State Plan	Phase 1A	AL Vaccination Providers	AL Provider Program Roadmap					
3					AL Vaccine Information						
4	Alaska	Phase 1B, Tier 2 (frontline essential), Phase 1C (other essential)	AK State Plan	Phase 1B (persons 65+)	AK Vaccine Availability Framework	AK Program Enrollment Instructions					
5					AZ 1B Essential Employer Request Form						
6	Arizona	Phase 1B	AZ State Plan	Phase 1B (in some counties)	AZ Vaccine Phases by County	AZ Pandemic Provider Onboarding					
7					AZ Vaccine Availability Infographic						
8	Arkansas	Phase 1B	AR State Plan	Phase 1B (Teachers and school staff; Persons 70+)	AR Phasing Information	AR Vaccine Provider Program					
9					CA Vaccination Information						
10	California	Phase 1B, Tier 2 (frontline essential), Phase 1C (other essential)	CA State Plan	Phase 1B, Tier 1	CA Recommendations for Moving through Phases and Tiers	CA Enrollment Resources					
11					CA Revision of Allocation Guidelines						
12					CA Vaccine Doses						

Sheet1

10:20 AM 1/23/2021

GCCA Resources

- WFLO Scientific Advisory Council
- GCCA Online Communities

What is the urgency of your request? *

- Urgent
- Somewhat Urgent
- Not Urgent

Please describe your inquiry with as much detail as possible. *

3PL Supply Chain Forum

Settings

Community Home

Discussion 621

Library 31

Members 7.2K

Back to discussions

What are your questions about COVID-19?

Catharine Perry yesterday
[You might have seen the GCCA member email that went out today about what the ass](#)

1. What are your questions about COVID-19?

Posted yesterday

QUESTIONS?

Global Cold Chain Alliance

www.gcca.org

703-373-4300

Lowell Randel

lrandel@gcca.org



Erin Grady

egrady@gcca.org



Jordan Bonfitto

jbonfitto@gcca.org

